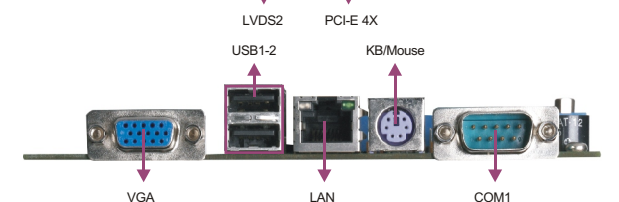
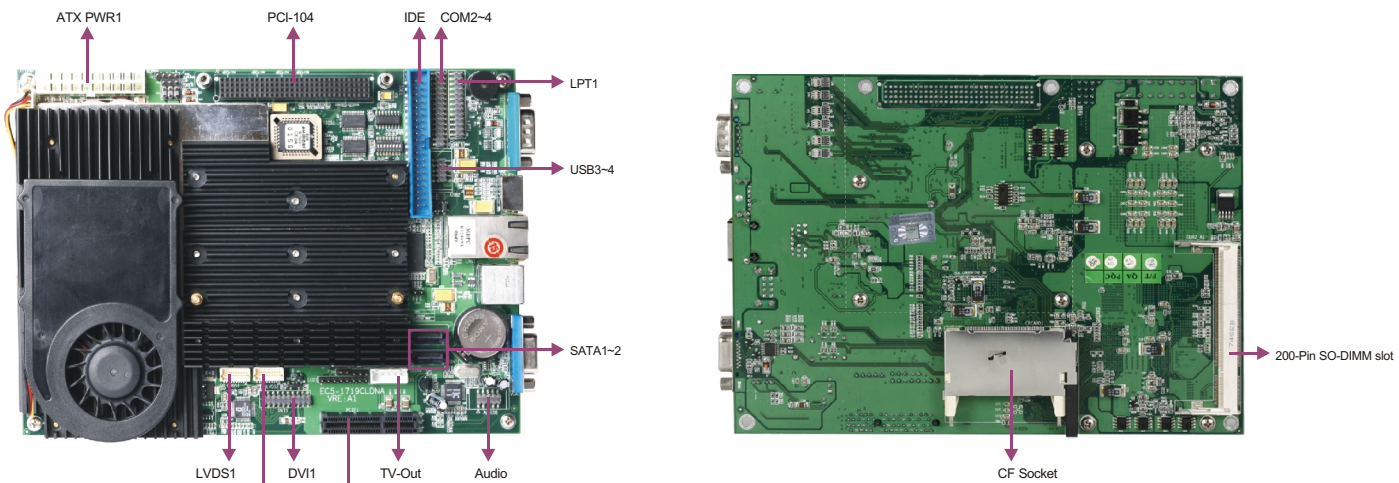


# EC5-1719CLDNA

5.25" SBC with CPU/VGA/LVDS/DVI/TV/SSD/ LAN/Audio

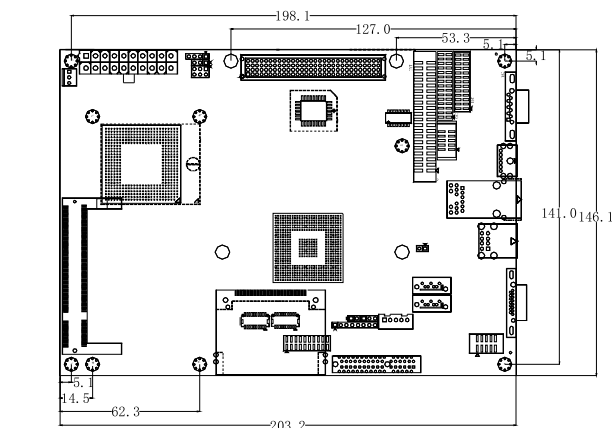


## Features

- Supports Core™ Duo L2400, T2500, Celeron® 440/423
- Mobile Intel® 945GME chipset, one DDR2 533/667MHz memory slot
- 1 x PCI-104, 1 x PCI-E X4
- 2 x SATAport, 4 x USB 2.0

## Specifications

System	
Processor	Supports Core™ 2 Duo T7400/ Core™ Duo T2500 L2400/ Celeron 440/423
Chipset	Mobile Intel® 945GME + Intel® ICH7M
Memory	1 x 200-pin SODIMM slot, DDR2 533/667MHz up to 2GB
Hardware Monitor	Monitors CPU temperature, voltage and fan speed. Supports ACPI
Watchdog Timer	1~255 sec./min. timer system reset or interrupt, setup by software
Expansion Interface	1 x PCI104, 1 x PCI-E x4
Storage	
IDE	1 x 40-pin Ultra ATA 100 IDE interface. Supports two IDE devices
Serial ATA	Two SATA ports, 300MB/s
Floppy	N/A
CompactFlash	1 x CompactFlash Type I/II socket
DOC/DOM	N/A
I/O Interface	
USB	4 x USB2.0 port
Serial Port	4 x RS-232 (COM1 supports RS-232/422/485)
Parallel Port	1 x LPT
IrDA	N/A
GPIO	N/A
Audio	AC'97, supporting Speaker-out, CD-in, Line-in and Line-out



## Display

Display Controller	Mobile Intel® 945GME integrated graphics controller, Intel fourth generation graphics engine, running at 200MHz. Shared video memory with system memory
Display Memory	128MB shared memory
Resolution	VGA mode: 2048 x 1536@75Hz, 1600@1200@85Hz LVDS mode: up to 1600 x 1200@60Hz/DVI mode: up to 1600 x 1200@85Hz
Display	VGA, LVDS, DVI, TV-OUT. Supports dual display

## Ethernet

Ethernet Controller	1 x Intel® 82573E Ethernet controller
Speed	10/100/1000Mbps
Connector Interface	1 x RJ45

## Mechanical and Environmental

Dimensions	203mm x 146mm
Operating Temperature	0°C~60°C
Storage Temperature	-20°C~70°C
Operating Humidity	5%-90%, non-condensing

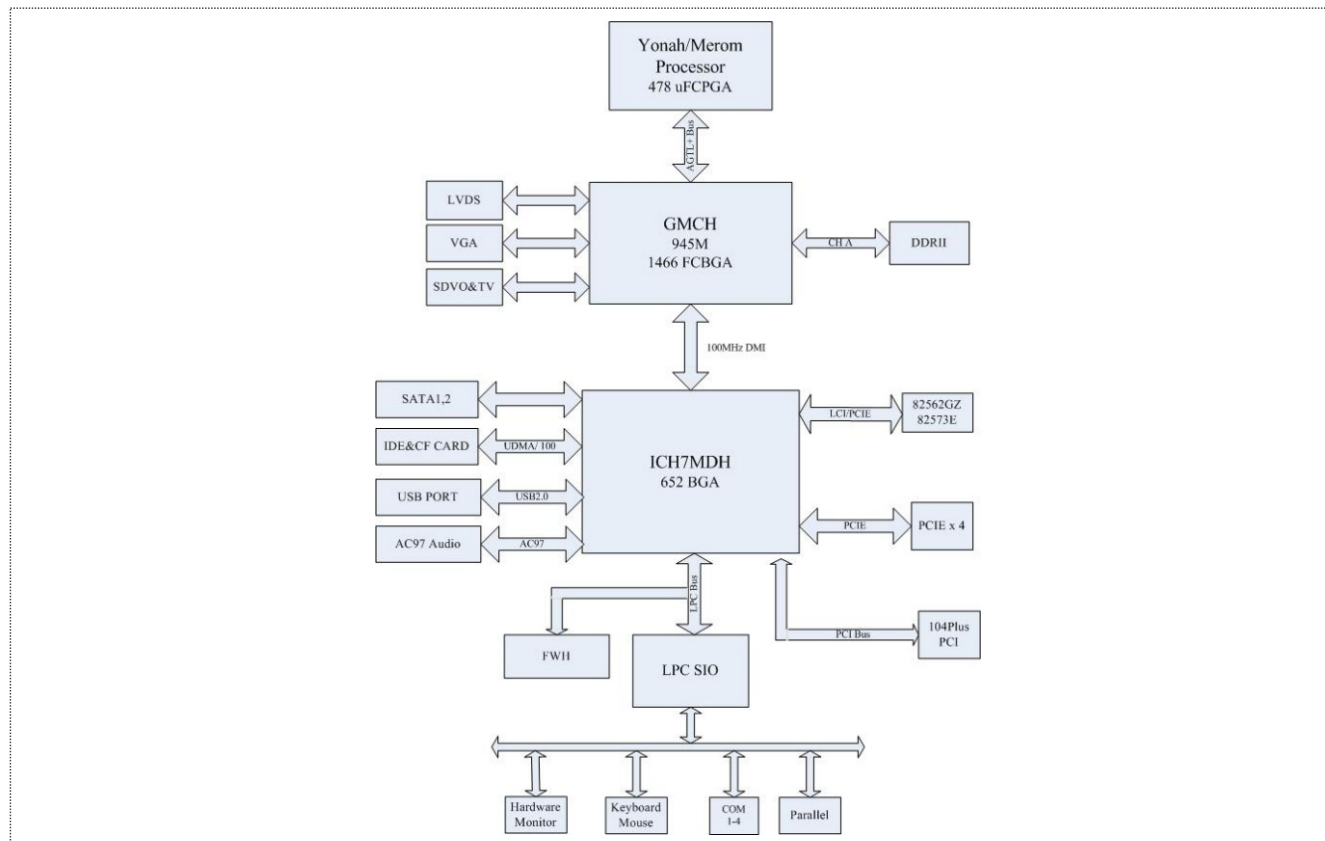
## Power

Power Supply	+5V, +12V power supply, supporting AT/ATX power supply
Power Consumption	27.38W (Typical)

## Operating System

Windows OS	Windows 2000/Windows XP
Embedded OS	Linux/XP Embedded

## Board Diagram



## Available Accessories

Part Number	Name	Description	Qty.
—	Driver CD/Protective film/RoHS	EC5-1719CLDNA	1
2360-005031	Y-cable for keyboard and mouse/RoHS	One minDIN port to two PS/2 ports, length: 250mm/RoHS	1
2360-008331	HDD flat cable/RoHS	DMA66/HDD/CABLE/40P/80-line/length: 450mm	1
2360-011211	Audio cable with bracket/RoHS	Three audio jacks to one 2x5 Pin connector (2.0mm pitch), length: 300mm/RoHS	1
2360-011221	Parallel port cable/RoHS	DB25 connector to 2x13 Pin connector (2.0mm pitch), length: 300mm/RoHS	1
2360-014781	Dual USB ports with bracket/RoHS	Two USB ports to one 2x5 Pin connector (2.0mm pitch), length: 550mm/RoHS	1
2360-014901	Serial port cable/RoHS	Three DB9 connector with stud to IDC 2x15 Pin 2.0mm pitch connector, length: 300mm	1
2360-014911	DVI cable/RoHS	DV1-D connector with screws to 2x10 Pin (2.0mm pitch) connector, length: 200mm	1
2360-014971	TV output converter cable/RoHS	S-video AV-OUTfemale connector to TJC3-5P female connector, length: 300mm	1
2360-017961	SATAHDD cable/RoHS	SATA7 Pin to SATA7 Pin with elbow connector, length: 550mm/RoHS	1
—	Setup Guide/RoHS	AMI/BIOS Setup Guide (for CORE/8)	1
—	User's Manual/RoHS	EC5-1719CLDNA	1

## Ordering Information

Part Number	Model Number	Description
0030-006180	EC5-1719CLDNA	Motherboard
0030-006181	EC5-1719CLDNA	Motherboard/RoHS
0030-001840	EC5-1719CLDNA/T2300/embedded star	Motherboard/T2300/embedded star
0030-001830	EC5-1719CLDNA/no CPU	Motherboard/no CPU