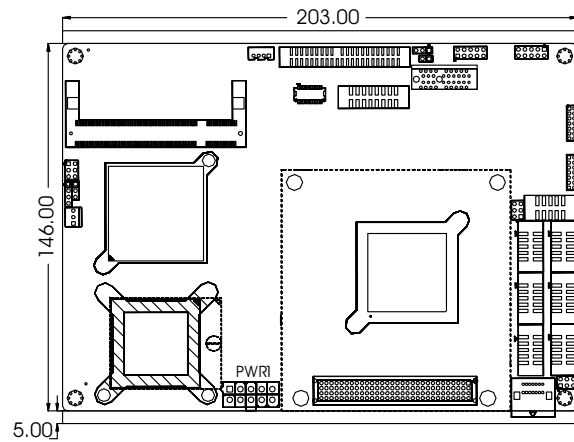
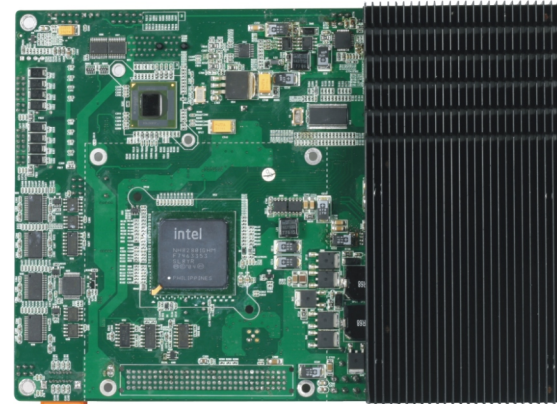
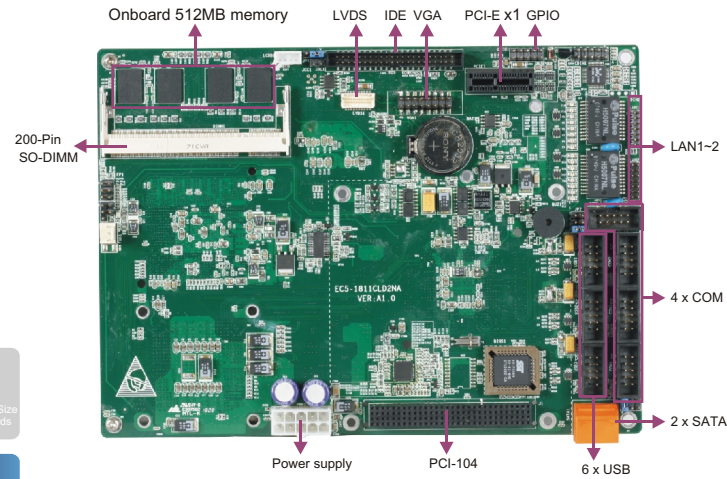


EC5-1811CL2NA



5.25" SBC With CPU/Memory/LVDS/VGA/2LAN/Audio



Features

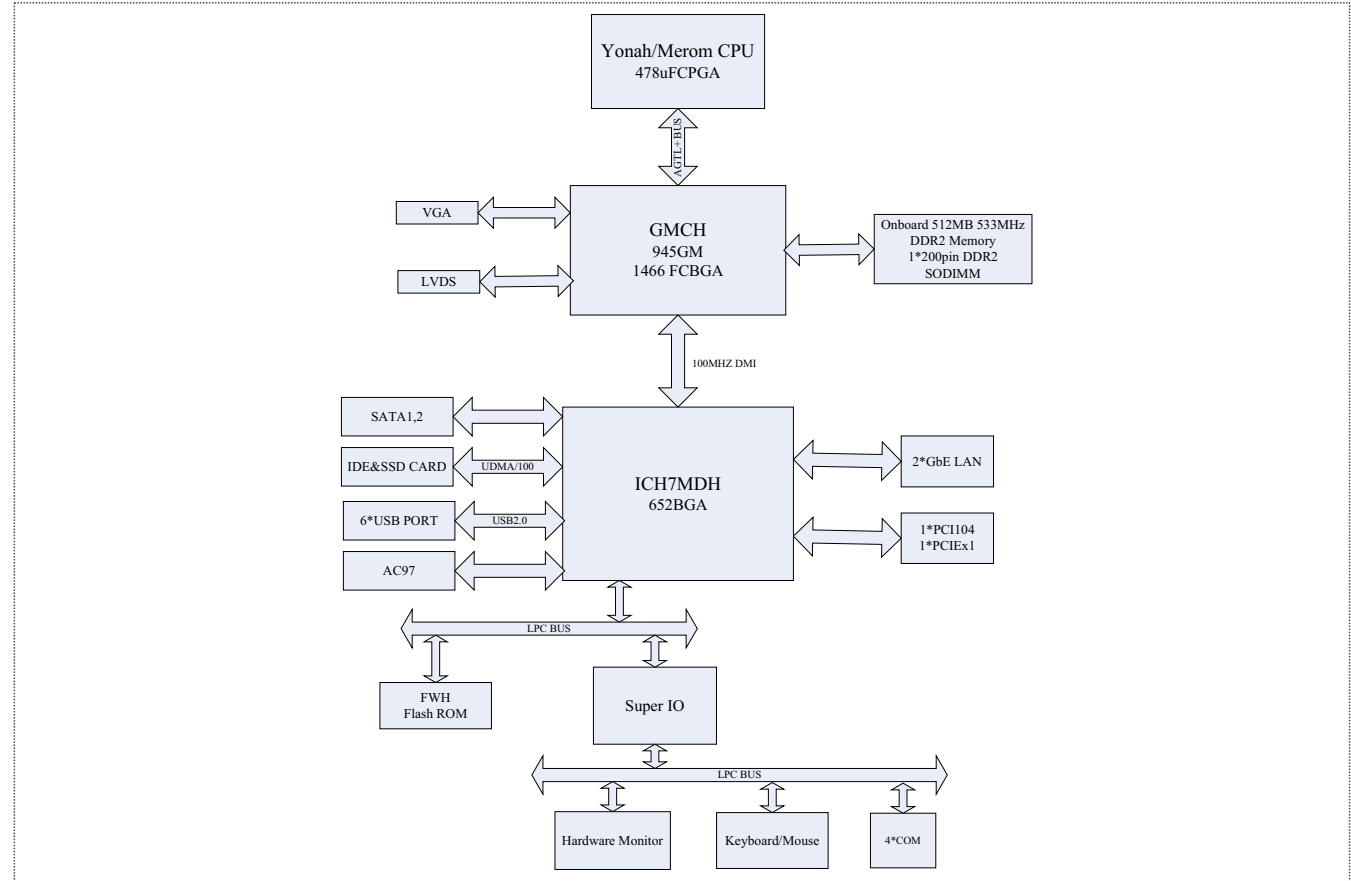
- Mobile Intel® 945GME + ICH7-MDH + Core™ 2 Dual CPU
- Supports VGA + LVDS dual display out
- Onboard 512MB DDR2 533 memory, 1 x 200-Pin DDR2 SO-DIMM
- 6 x USB2.0, 4 x COM, 2 x GbE LAN
- Onboard HD audio, supporting Speaker-out, Line-in, Mic-in
- Wide temperature from -40°C~70°C

Specifications

System	
Processor	Intel® Core 2 Duo CPU
Chipset	Mobile Intel® 945GME + ICH7-MDH
Memory	Onboard 512MB DDR2 533 memory, 1 x 200-Pin SO-DIMM
Hardware Monitor	Monitors system status, voltage, temperature and fan speed
Watchdog Timer	1~255 sec./min. timer system reset or interrupt, setup by software
Expansion Interface	1 x PCI104 slot, 1 x PCI-E x1
Storage	
IDE	1 x 44PIN IDE PORT
Serial ATA	2 x SATAport, supporting RAID0, RAID1
Floppy	N/A
CF	N/A
DOC/DOM	N/A
I/O Interface	
USB	6 x USB2.0 ports, available interface of 9-pin header onboard
Serial Port	4 x RS-232, available interface of 10-pin header onboard
Parallel Port	N/A
IrDA	N/A
GPIO	4 x GPI, 4 x GPO
Audio	Realtek® ALL888 HDA, available interfaces of Speaker-out, Line-in and Mic-in
Keyboard/Mouse	N/A

Display	
Chipset	Intel® GMA950 graphics code
Memory	Shares system memory
Resolution	VGA mode up to 2048 x 1536@75Hz 18-bit LVDS mode up to 048 x 1536@60Hz
Dual Display	Supports VGA and LVDS dual-channel display
Ethernet	
Chipset	Intel® 82573E
Speed	10/100M/1000Mbps
Connector	2 x LAN port, available interface of 9-pin header onboard
Mechanical and Environmental	
Dimensions	203mm x 146mm
Operating Temperature	-40°C~70°C
Storage Temperature	N/A
Operating Humidity	5%~90%, non-condensing
Power	
Power Supply	Supports ATX power supply
Power Consumption	N/A
Operating System	
Windows OS	Windows 2000/Windows XP
Embedded OS	Linux

Board Diagram



Available Accessories

Part Number	Name	Description	Qty.
2192-004681	Driver CD/Protective Film/RoHS	EC5-1811CLD2NA/A0	1
2330-000041	Jumper/RoHS	2.54mm pitch,blue	4
2412-000331	Setup Guide/RoHS	AMI BIOS Setup Guide	1
2413-011111	User's Manual/RoHS	EC5-1811CLD2NA/A0	1

Related Product

Item	Typical Recommendation
JMC-1511	Box PC with EC5-1811CL2NA

Ordering Information

Part Number	Model Number	Description
	EC5-1811CL2NA	L7400 CPU/LVDS/VGA/2*LAN/Audio
	EC5-1811CL2NA-01	T7400 CPU/LVDS/VGA/2*LAN/Audio

1 Full-Size/Half-Size Slot CPU Cards
2 SBC/Motherboard/Modules
3 Embedded Box PC
4 Network Application Computers
5 Industrial PC
6 HMI
7 EVOG Rugged Series
8 MCC Series
9 Chassis
10 Data Acquisition Boards & Modules
11 Accessories

1 Full-Size/Half-Size Slot CPU Cards
2 SBC/Motherboard/Modules
3 Embedded Box PC
4 Network Application Computers
5 Industrial PC
6 HMI
7 EVOG Rugged Series
8 MCC Series
9 Chassis
10 Data Acquisition Boards & Modules
11 Accessories