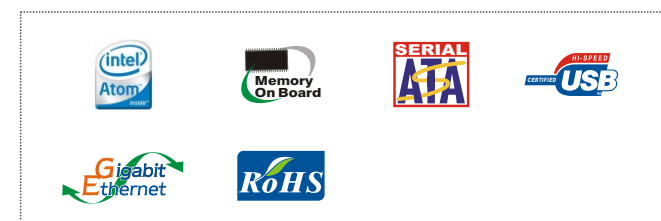
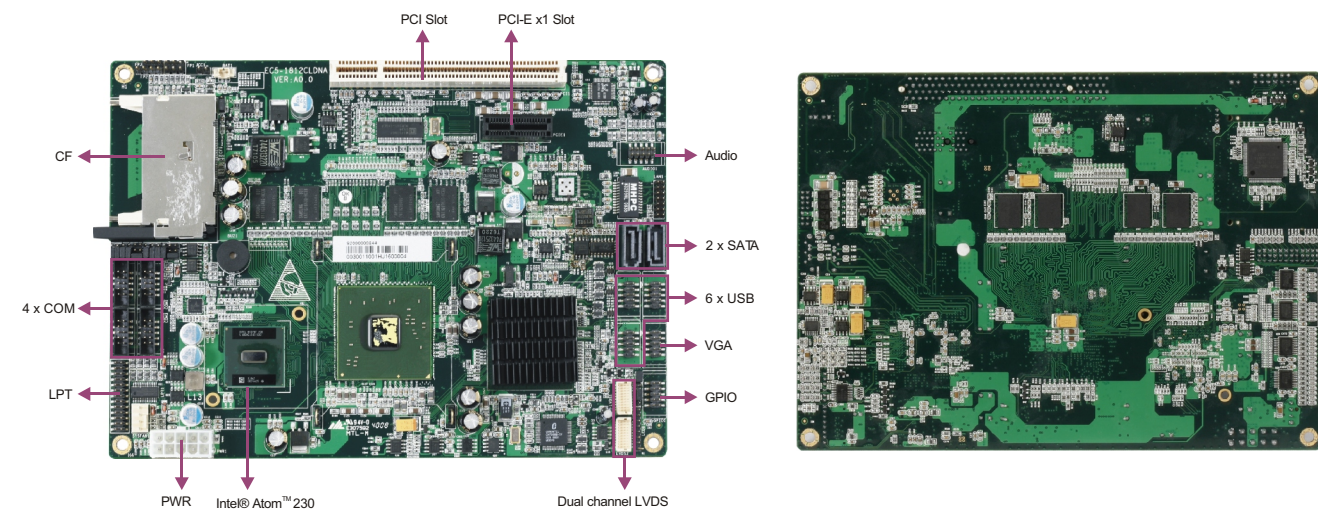


EC5-1812CLDNA

5.25" SBC with Atom™ CPU and LVDS/VGA/SSD/LAN/Audio

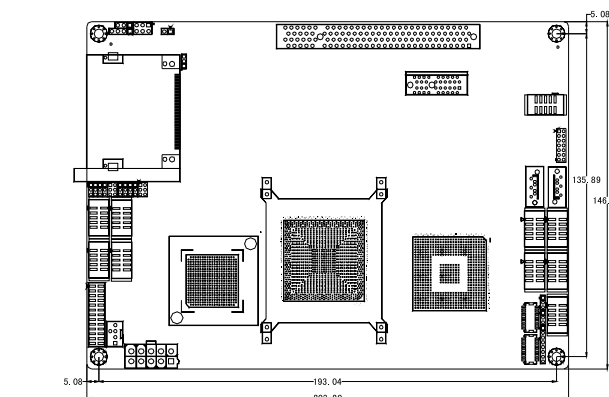


Features

- Onboard Intel® Atom™ 230 CPU
- Intel® 945GC+ICH7 chipset
- Onboard 1GB DDR2 533MHz system memory
- 6 x USB port, 1 x parallel port, 4 x serial port, 8-channel digital I/O (4I/4O)
- 1 x PCI-E slot, 1 x PCI slot and 1 x GbE LAN

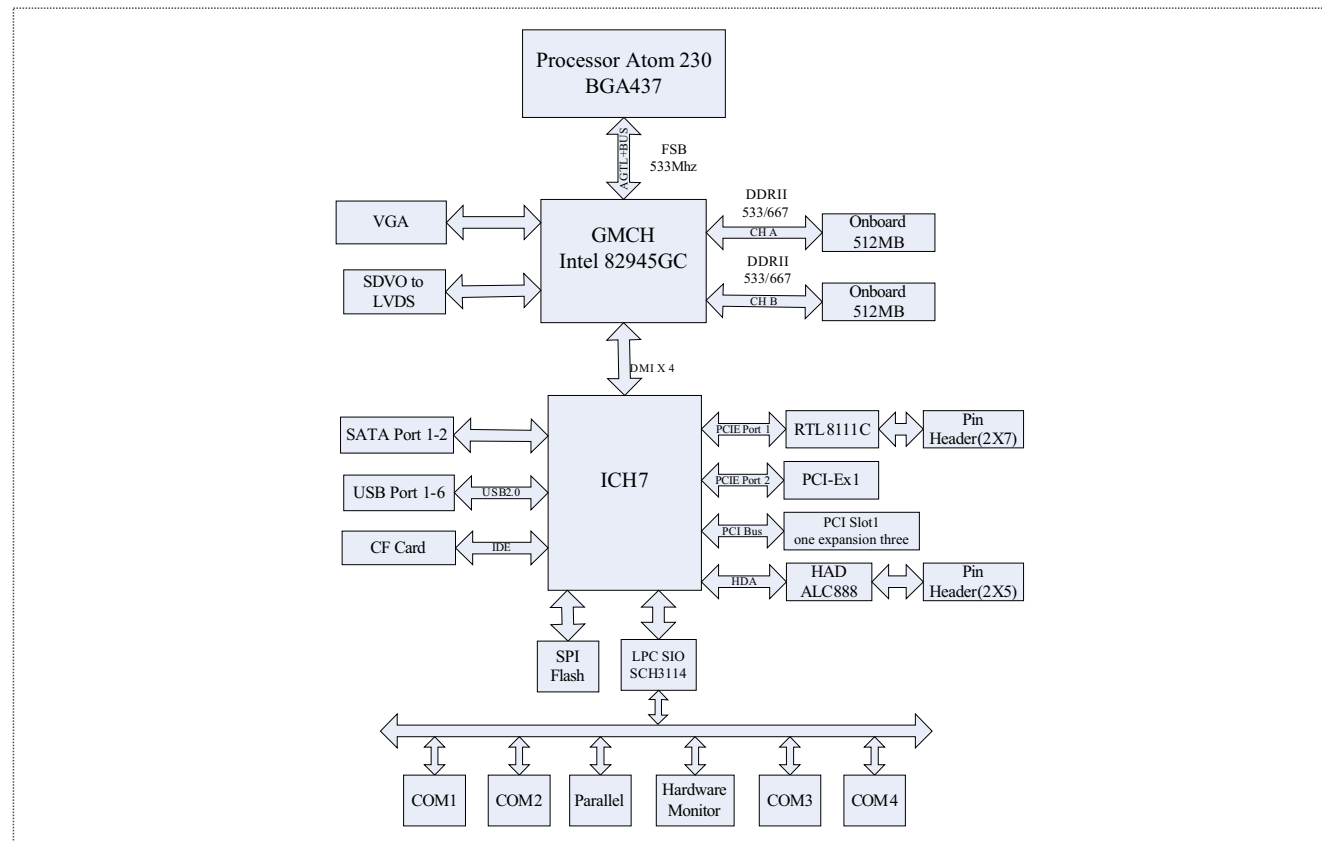
Specifications

System	
Processor	Onboard Intel® Atom™ 230 processor
Chipset	Intel® 945GC + ICH7 chipset
Memory	Onboard DDR2 533MHz DRAM 1GB
Hardware Monitor	Monitors CPU temperature, voltage. Supports ACPI
Watchdog Timer	1~255 sec./min. timer system reset or interrupt, setup by software
Expansion Interface	1 x PCI-E x1 slot, 1 x PCI slot
Storage	
IDE	N/A
Serial ATA	Two SATA ports, 150MB/s
Floppy	N/A
CompactFlash	1 x CompactFlash Type I/II socket
DOC/DOM	N/A
I/O Interface	
USB	6 x USB2.0 port
Serial Port	4 x COM
Parallel Port	1 x LPT
IrDA	N/A
GPIO	8-channel digital IO (4I/4O)
Audio	Realtek ALC888 controller, supporting Speaker-out, Line-in and Line-out



Display	
Display Controller	Intel® 945GC integrated graphics acceleration controller at 400MHz
Display Memory	128MB shared memory
Resolution	VGA mode: up to 2048 x 1536@75Hz, 1600 x 1200@85Hz / LVDS mode: up to 1600 x 1200@60Hz
Display	VGA + LVDS dual display
Ethernet	
Ethernet Controller	1 x RTL 8111C Ethernet controller
Speed	10/100/1000Mbps
Connector Interface	1 x RJ45
Mechanical and Environmental	
Dimensions	203mm x 146mm
Operating Temperature	0°C~60°C
Storage Temperature	-20°C~70°C
Operating Humidity	5%-90%, non-condensing
Power	
Power Supply	AT/ATX power supply supported
Power Consumption	N/A
Operating System	
Windows OS	Windows 2000/Windows XP
Embedded OS	Linux/XP Embedded

Board Diagram



Available Accessories

Part Number	Name	Description	Qty.
2360-014891	Power cable/RoHS	One male 20 Pin (2x10) port to female 2x5 Pin connector (4.2mm pitch), length: 150mm/RoHS	1
2360-012641	VGA cable/RoHS	VGA connector to 2x5 Pin connector (2.0mm pitch), length: 300mm/RoHS	1
2360-002581	Audio cable with bracket/RoHS	Three audio jacks to one 2x5 Pin connector (2.0mm pitch), length: 300mm/RoHS	1
2360-014781	Dual USB ports with bracket/RoHS	Two USB ports to one 2x5 Pin connector (2.0mm pitch), length: 550mm/RoHS	3
2360-018021	SATAHDD cable/RoHS	SATA-7P(female)with metal strip spring, length: 550mm	2
2360-000311	Parallel port cable/RoHS	DB25 connector to 2x13 connector (2.0mm pitch), length: 160mm	1
2360-011231	Serial port cable/RoHS	DB9 connector to 2x5 Pin connector (2.0mm pitch), length: 300mm/RoHS	4
2360-024341	(YF) LAN cable/RoHS	RJ45 connector to 2x7 Pin (2.0mm pitch)/UL20276/28AWG/14-line, length: 300mm	1
—	Setup Guide/RoHS	AM/BIOS Setup Guide (for CORE8)	1
—	Driver CD/Protective film/RoHS	EC5-1812CLDNA	1
—	User's Manual/RoHS	EC5-1812CLDNA	1
2330-000011	Jumper/RoHS	2.0mm pitch	2

Ordering Information

Part Number	Model Number	Description
0030-011000	EC5-1812CLDNA	(YF) Motherboard
0030-011001	EC5-1812CLDNA	(YF) Motherboard/RoHS