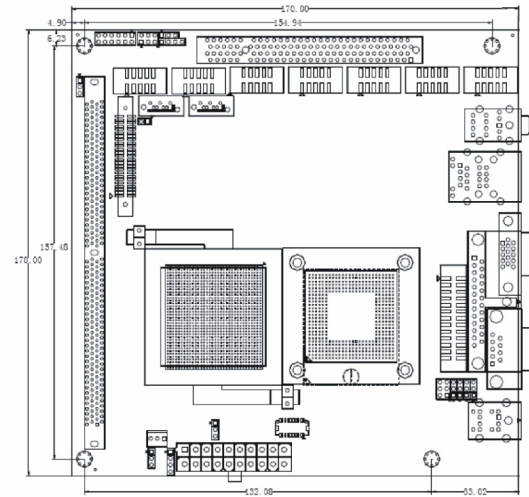
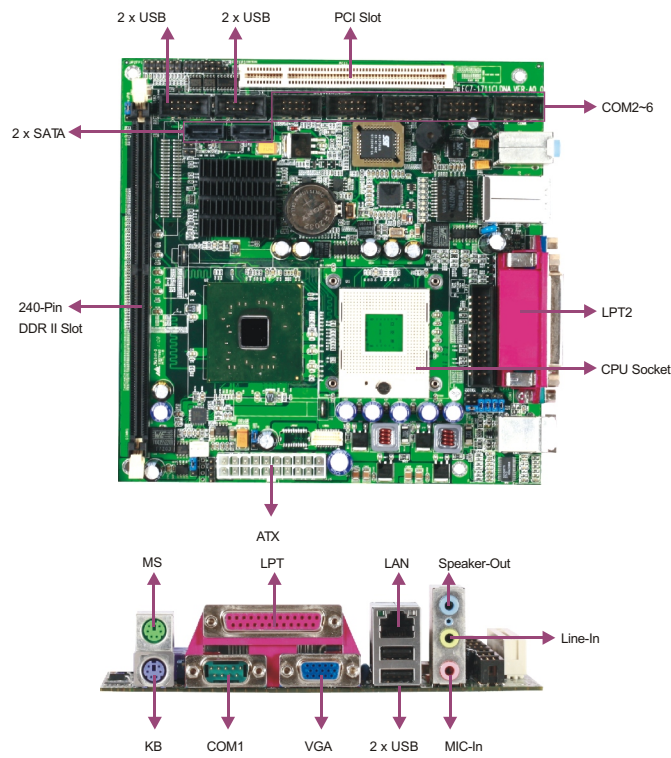


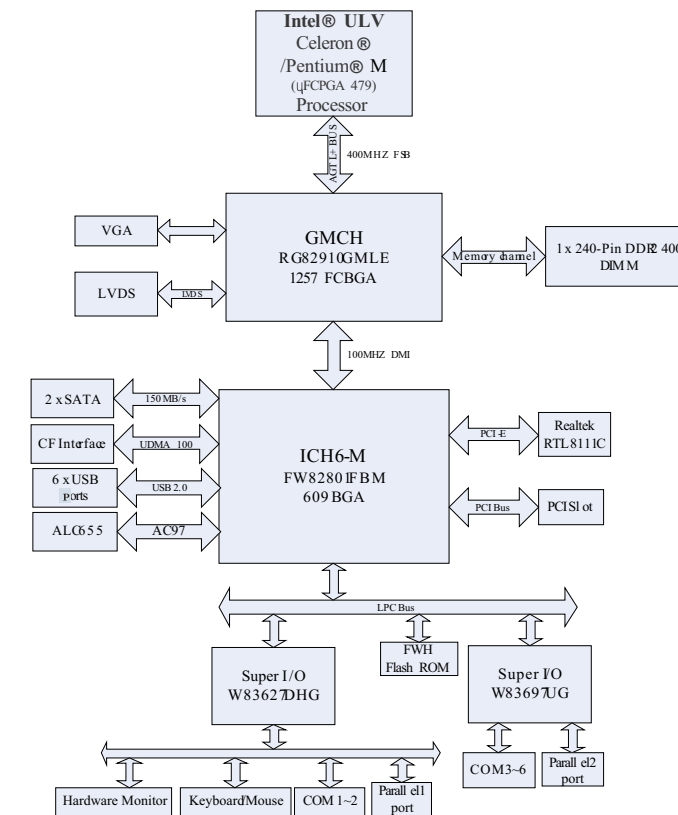
# EC7-1711LDNA



Mini-ITX SBC with LVDS/VGA/SSD/LAN/Audio/6COM



## Board Diagram



## Available Accessories

Part Number	Name	Description	Qty.
2340-002131	Cooler/RoHS	Fan + heat sink + backplate/EPN-41CES-01-GP	1
2360-002571	Dual USB ports with bracket/B4/RoHS	Two USB ports to one 2x5 Pin, length: 210mm/RoHS	1
2360-005051	Parallel port cable/RoHS	Parallel port cable, DB25 connector to 26 Pin, length: 300mm/RoHS	1
2360-002621	Serial port cable/RoHS	DB9 connector to IDC 2x5 Pin connector (2.54mm pitch), length: 250mm/RoHS	5
2360-018011	SATAHDD cable/RoHS	(7p-7p), length: 300mm/RoHS	2
—	Setup Guide/RoHS	AMI BIOS Setup Guide (for CORE8)	1
—	User's Manual/RoHS	EC7-1711 series	1
—	Driver CD/Protective film/RoHS	EC7-1711 series	1

## Ordering Information

Part Number	Model Number	Description
0030-001170	EC7-1711LDNA	Motherboard

## Features

- Supports Intel® Celeron® M or Pentium® M processor, 400MHz FSB
- One 240-pin DDR II DIMM slot, memory up to 1GB
- Supports one GbE LAN
- Supports dual display of VGA and 18-bit LVDS
- Supports PCI bus expansion
- 8-channel digital input and digital output
- Six serial ports, two parallel ports, two SATA ports, six USB ports

## Display

Display Controller	Intel 910GML E chipset integrated
Display Memory	128MB shared memory
Resolution	VGA mode up to 2048 x 1536@75Hz or 1600 x 1200@85Hz / LVDS mode up to 1280 x 1024@60Hz 18bpp
Display	Supports VGA and 18-bit LVDS display and dual display of VGA+LVDS

## Ethernet

Ethernet Controller	1 x Realtek RTL8111C Ethernet controller
Speed	10/100/1000 Mbps
Connector	1 x RJ45

## Mechanical and Environmental

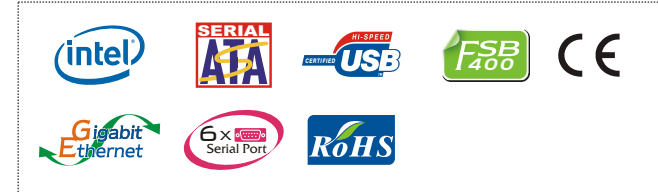
Dimensions	170mm x 170mm
Operating Temperature	0°C~60°C (optional -20°C~65°C)
Storage Temperature	-25°C~75°C
Operating Humidity	5%-90%, non-condensing

## Power

Power Supply	20-pin ATX power supply
Power Consumption	20.9W (Typical)

## Operating System

Windows OS	Windows NT 4.0/Windows 98SE/ Windows 2000/ Windows XP
Embedded OS	Linux/XP Embedded



## Specifications

System	
Processor	Supports Intel® Celeron® M or Pentium® M processor on 400MHz FSB
Chipset	Intel® 910GML E+ICH6M
Memory	One 240-pin DDR II DIMM slot, memory up to 1GB
Hardware Monitor	Monitors the system status, voltage, temperature and fan speed
Watchdog Timer	Software programmable supports 1~255 sec./min. System reset/interrupt
Expansion Interface	One PCI slot, supporting PCI bus expansion. Both PCI and 1 to 3 PCI expansion card are available
Storage	
IDE	N/A
Serial ATA	2 x SATAII port
CF	1 x CompactFlash socket
I/O Interface	
USB	6 x USB2.0 port (2 rear panel ports, 2 onboard USB headers, providing 4 extra ports)
Serial Port	6 x RS232 (COM1 supports RS-232/422/485)
Parallel Port	2 x LPT
Keyboard/Mouse	1 x PS/2
GPIO	4-bit digital input and 4-bit digital output, TTL level
Audio	AC'97, ALC655, supporting Mic-in/Line-in/Speaker-out