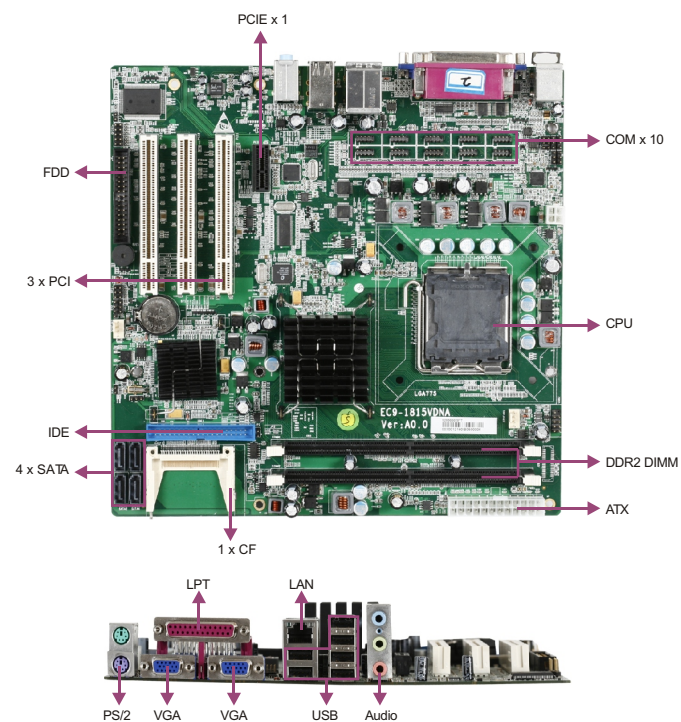


EC9-1815VDNA

Embedded ATX SBC with VGA/SSD/LAN/Audio



Features

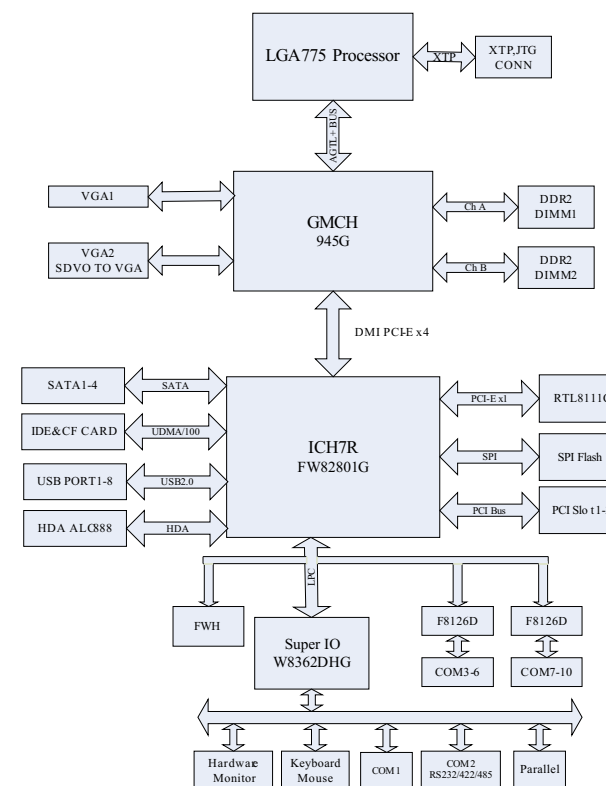
- Supports Intel® LGA775 Core™ 2 Duo processor
- Supports 2 x 240-pin DIMMs, dual channel up to 4GB of DD2 R533/667
- Dual VGA port supports dual display
- Supports three PCI expansion slots, one PCI-Express expansion slot
- Supports 8 x USB2.0, 10 x COM, 4 x SATA, 3 x PCI, 1 x PCI-Express x1

Specifications

| System | |
|---------------------|---|
| Processor | Intel® LGA775 Core™ 2 Duo processor, FSB800/1066MHz |
| Chipset | Intel® 945G + ICH7 |
| Memory | Supports 2 x 240-pin DIMMs, dual-channel, up to 4GB, optional DDR2 533/667MHz |
| Hardware Monitor | Monitors system status, voltage, temperature and fan speed |
| Watchdog Timer | 1~255 sec./min. timer system reset or interrupt, setup by software |
| Expansion Interface | 3 x PCI slot, 1 x PCI-Express x1 slot |
| Storage | |
| IDE | 1 x 40-pin IDE |
| Serial ATA | 4 x Serial ATA interface |
| Floppy | 1 x FDD |
| CF | 1 x CF card |
| DOC/DOM | N/A |
| I/O Interface | |
| USB | 8 x USB2.0 port |
| Serial Port | 9 x RS-232, 1 x RS-232/422/485 |
| Parallel Port | 1 x LPT |
| IrDA | N/A |
| GPIO | N/A |
| Audio | HD Audio controller ALC888, available interfaces of Speaker-out, Line-in and Mic-in |
| Keyboard/Mouse | 1 x PS/2 |

| Display | |
|------------------------------|--|
| Chipset | Intel® 945G integrated graphics controller |
| Memory | 256MB shared memory |
| Resolution | VGA mode up to 2048 x 1536@75Hz |
| Dual Display | VGA + VGA |
| Ethernet | |
| Chipset | 1 x RTL8111C |
| Speed | 10/100/1000Mbps |
| Connector | 1 x RJ45 |
| Mechanical and Environmental | |
| Dimensions | 243.84mm x 243.84mm |
| Operating Temperature | -10°C~50°C |
| Storage Temperature | -20°C~60°C |
| Operating Humidity | 5%-90%, non-condensing |
| Power | |
| Power Supply | Supports ATX power supply |
| Power Consumption | N/A |
| Operating System | |
| Windows OS | Windows 2000/ Windows XP |
| Embedded OS | Linux/XP Embedded/WinCE |

Board Diagram



Ordering Information

| Part Number | Model Number | Description |
|-------------|--------------|-----------------|
| 0030-012190 | EC9-1815VDNA | (YF)Motherboard |

1

Full-Size/Half-Size Slot CPU Cards

2

SBC/Motherboard/Modules

3

Embedded Box PC

4

Network Application Computers

5

Industrial PC

6

HMI

7

EVOG Rugged Series

8

MCC Series

9

Chassis

10

Data Acquisition Boards & Modules

11

Accessories

1

Full-Size/Half-Size Slot CPU Cards

2

SBC/Motherboard/Modules

3

Embedded Box PC

4

Network Application Computers

5

Industrial PC

6

HMI

7

EVOG Rugged Series

8

MCC Series

9

Chassis

10

Data Acquisition Boards & Modules

11

Accessories