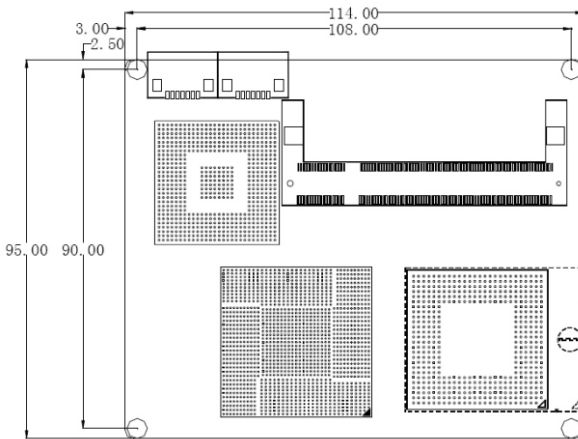
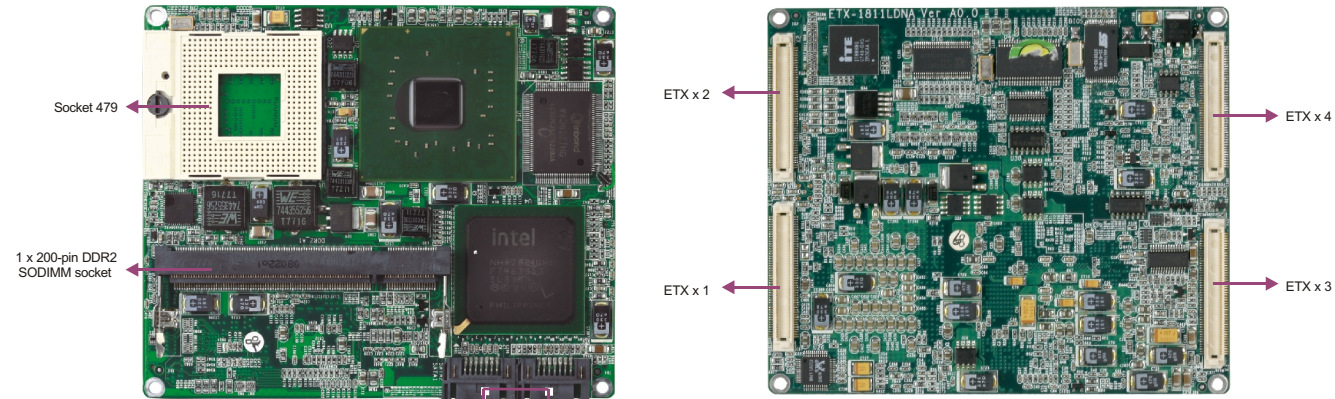


ETX-1811LDNA

ETX SBC with VGA/LVDS/SSD/LAN/Audio



Features

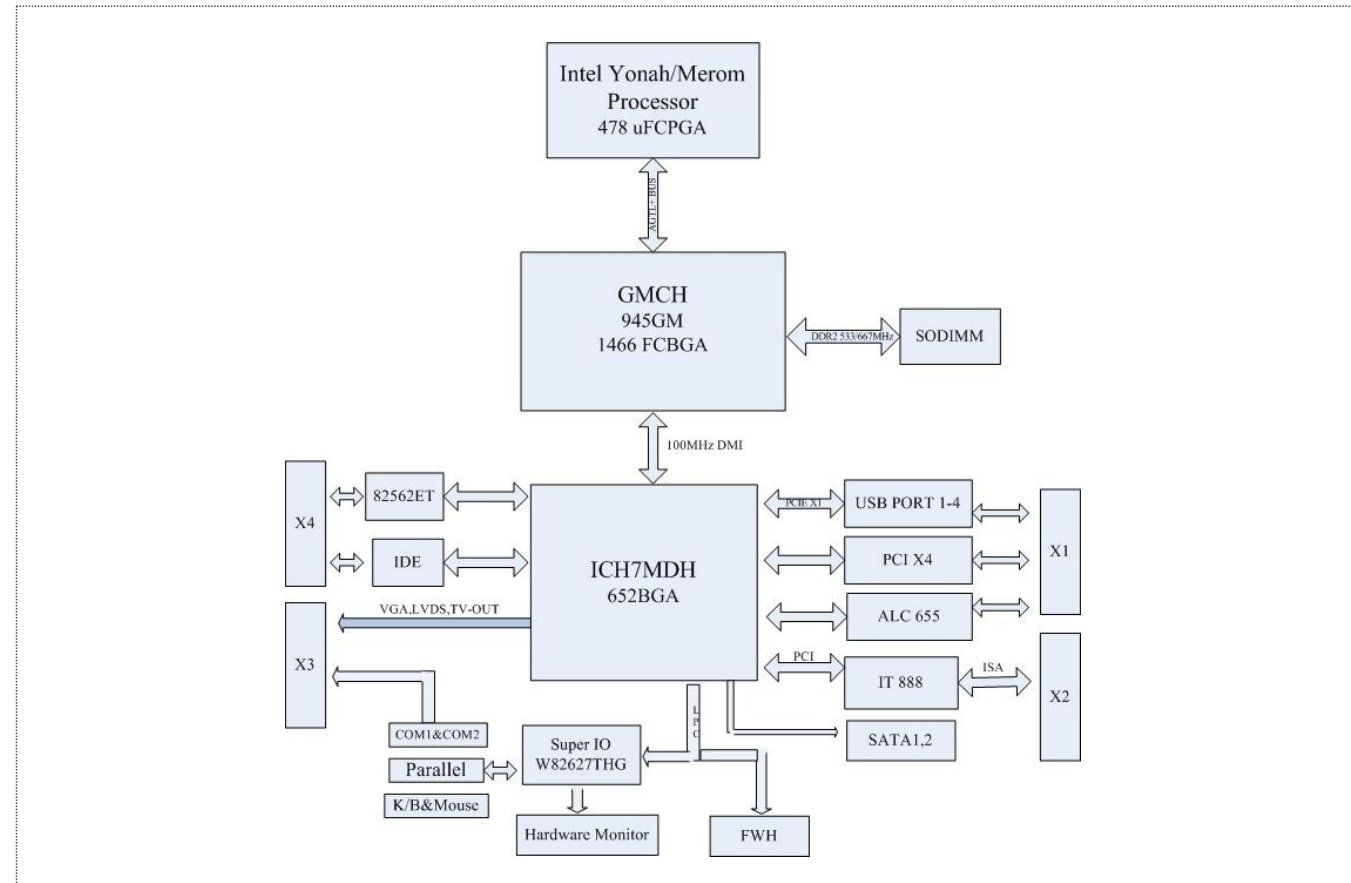
- Supports Intel® Core™ 2 Duo processor T7400 Core™ Duo/L2400, ULV Celeron® 423 processor
- Intel® 945GM + ICH7 MDH
- One SODIMM DDR2 400/533/667MHz Memory socket up to 2GB
- 2 x SATA interface, 1 x 10/100Mbps Ethernet controller

Specifications

System	
Product Type	ETX 3.02 SBC
Processor	Supports Intel® Core™ 2 Duo processor T7400 Core™ Duo/L2400, ULV Celeron® 423 processor
Chipset	Intel® 945GM + ICH7MDH
Memory	One SO DIMM DDR2 400/533/667MHz Memory slot up to 2GB
Hardware Monitor	Monitors system status, voltage, temperature and fan speed
Watchdog Timer	Software programmable supports 1~255 sec./min. System reset/interrupt
Expansion Interface	Via carrier board EDB-ETX04
Storage	
IDE	One ATA-100 IDE interface, supporting two IDE devices
Serial ATA	2 x SATA
Floppy	N/A
I/O Interface	
USB	4 x USB2.0
Serial Port	2 x COM
Parallel Port	1 x parallel port
IrDA	N/A
GPIO	N/A
Audio	Onboard AC' 97, supporting Speaker-out, Line-in and Mic-in

Display	
Display Controller	Intel® 945GM integrates GMA 950 graphics controller, supporting VGA, dual-channel LVDS and TV-OUT
Ethernet	
Ethernet Controller	Intel® 82562ET Ethernet controller
Speed	10/100Mbps
Connector Interface	N/A
Mechanical and Environmental	
Dimensions	114mm x 95mm
Operating Temperature	0 C~60 C
Storage Temperature	-15 C~75 C
Operating Humidity	5%~90%, non-condensing
Power	
Power Supply	Supports +5, +12V power supply (via carrier board)
Power Consumption	N/A
Operating System	
Windows OS	Windows 2000/ Windows XP
Embedded OS	Linux/Windows CE/XP Embedded
Carrier Board(Optional)	
Model	EDB-ETX04 (ETX 3.02 SBC)
Expansion Bus	PCI+ISA
Network	1 x RJ45 interface
Storage	1 x IDE port, 1 x CompactFlash socket
I/O Interface	1 x parallel port, 1 x RS-232, 1 x RS-232/422/485 serial port; 1 x PS/2, audio, 4 x USB 2.0
Operating Temperature	0 C~60 C

Board Diagram



Available Accessories

Part Number	Name	Description	Qty.
—	Driver CD/Protective film/RoHS	ETX-1811LDNA	1
—	Setup Guide/RoHS	AMI/BIOS Setup Guide (for CORE8)	1
—	User's Manual/RoHS	ETX-1811LDNA	1
2340-002171	Thermal plate/RoHS	AL6063-T5 114 x 95 x 6.4 black+Cu1100	1
2391-000051	Bolt/RoHS	Countersunk head M2.5 x 5/GB-T819-1985	4
2391-006341	Copper stud bolt/RoHS	CH-M2.5-3-3.6	4
2391-006641	Round nut/RoHS	M2.5-2/S-M2.5-2/through hole/stainless steel	4
2391-007921	Hex copper stud bolt/RoHS	Screw length: 3.3mm/bolt: NI/CH-M2.5-7	4
2421-001131	Thermal pad/RoHS	15 x 15 x 0.5/G579	2
2421-001201	Heat film/RoHS	25.0 x 25.0 x 0.5/G580	1

Ordering Information

Part Number	Model Number	Description
0030-002490	ETX-1811LDNA	Motherboard
0030-008520	ETX-1811LDNA-C	Motherboard/Celeron™ 423 1.06G
0030-008530	ETX-1811LDNA-CD	Motherboard/Core™ Duo L2400 1.66G
	EDB-ETX04	Backplane

1

Full-Size/Half-Size Slot CPU Cards

2

SBC/Motherboard/Modules

3

Embedded Box PC

4

Network Application Computers

5

Industrial PC

6

HMI

7

EVOG Rugged Series

8

MCC Series

9

Chassis

10

Data Acquisition Boards & Modules

11

Accessories

1

Full-Size/Half-Size Slot CPU Cards

2

SBC/Motherboard/Modules

3

Embedded Box PC

4

Network Application Computers

5

Industrial PC

6

HMI

7

EVOG Rugged Series

8

MCC Series

9

Chassis

10

Data Acquisition Boards & Modules

11

Accessories