

## Main Features

- ♦ Support Intel® Atom™ Dual Core D525 Processor
- ♦ Support DDR3 SO-DIMM SDRAM, up to 2GB
- ♦ Support VGA/ LVDS 18/ 24-bit Display
- ♦ Dual Intel Gigabit Ethernet
- ♦ Support PCI 104, 1x Mini PCI Express Socket
- ♦ 4 x COMs, 6 x USB 2.0
- ♦ Single DC12V Power Input

## Product Overview

The EBC 352 is a 3.5" board with an on-board Intel® Atom™ dual core D525 with L2 cache 1MB and supports DDR3 SO-DIMM SDRAM module. It features dual display application to support independent CRT and LVDS 18/24-bit interface, dual Gigabit Ethernet, one PCI 104 and one mini PCI Express slot.

## Specifications

### CPU Support

- ♦ On-board Intel® Atom™ Dual Core D525 (1.8GHz, 1M Cache) processor

### Main Memory

- ♦ 1 x 204-pin DDR3 SO-DIMM socket, DDR3 800 2GB Max., Non-ECC and Un-buffered

### Chipset

- ♦ Intel® NH82801HBM (ICH8M)

### BIOS

- ♦ AMI BIOS
- ♦ Plug & Play support
- ♦ Advanced Power Management
- ♦ Advanced Configuration & Power Interface
- ♦ 8M bits SPI ROM

### On-board LAN

- ♦ 2 x Intel® GbE LAN controllers
- ♦ Support Boot From LAN (PXE) and Wake on LAN (WoL)
- ♦ 2 x RJ45 with LED

### Display

- ♦ Intel® D425/D525 integrated graphic engine, support DirectX\*9, with Intel Clear Video Technology on MPEG2 Hardware Acceleration
- ♦ Analog VGA interface: 1 x DB15 VGA port, support up to 2048x1563@ 60Hz resolution

- ♦ 2x DF-13 20-pin LVDS connector, support single (24-bit) or dual (48-bit) LVDS panel support
- ♦ CCFL interface: 1 x 7-pin JST connector, 5V or 12V power source to enable LCD Panel backlight Inverter

### Audio

- ♦ Realtek ALC888 CODEC for High Definition
- ♦ 1 x Mic-in and 1 x Line-out Pin header

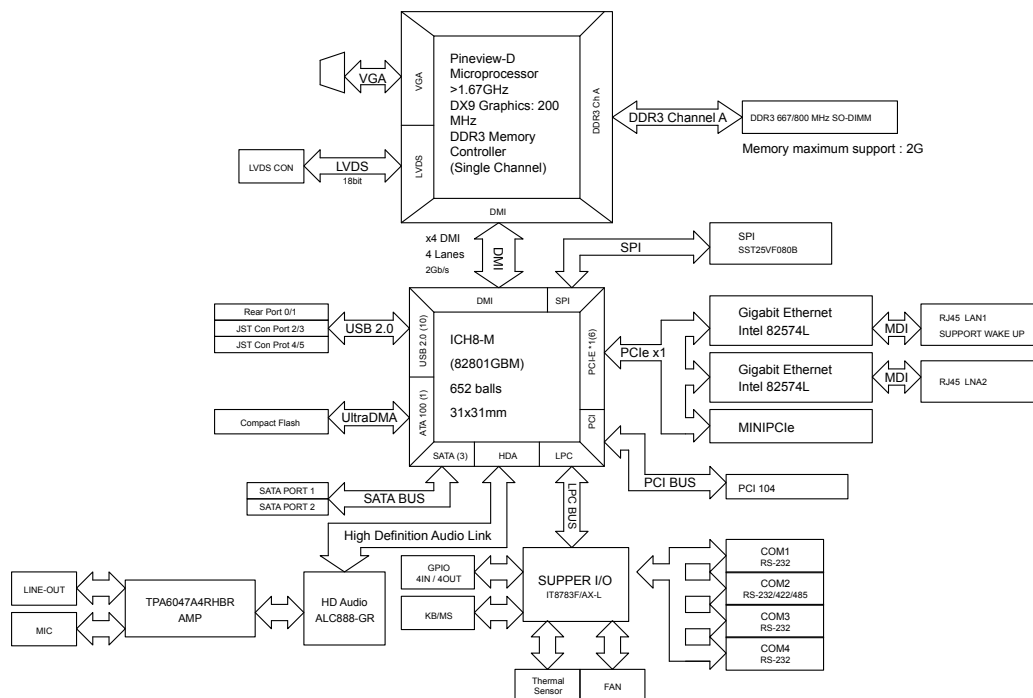
### Expansion

- ♦ 1 x Mini-PCIe socket

### I/O Interface

- ♦ Serial port: 4 port
  - 1 x RS232 DB9 Connector
  - 2 x RS232 with 10-pin box header, 2.0mm pitch
  - 1 x RS232/422/485 (COM2) with 10-pin box header, 2.0mm pitch
- ♦ USB 2.0: 6 ports
  - 2 ports with USB 2.0 connector
  - 4 ports with internal JST connector
  - 8 x GPIO, 10-pin pin header, (GPI 0~3 and GPO0~3) with TTL Level (0/5V)
- ♦ On-board Power LED and HDD Active LED Pin Header
- ♦ 1 x 3-pin fan connector (for CPU)
- ♦ 1 x Keyboard/Mouse pin header
- ♦ On board Buzzer/ SMBus2.0/ Reset SW

## Block Diagram



### Watchdog Timer

- Watchdog timeout can be programmable by Software from 1 second to 255 seconds and from 1 minute to 255 minutes (Tolerance 15% under room temperature 25°C)

### Storage

- 2 x SATA connector (support 2.5" HDD and SATA DOM)
- 1 x CF socket

### System Monitor

- Monitoring of 4 voltages and 2 temperatures
- 4 Voltage (Vcore, +12V, +3.3V, +5V)
- 2 Temperatures (CPU, System)

### On-board RTC

- On-chip RTC with battery backup
- 1 x External Li-Ion battery

### Power Input

- Support AT and ATX mode (ATX as the default)

### Power Requirements

- Power requirement: +12 V DC Input
- One 4-pin power connector

### Dimensions

- 3.5" form factor
- 146mm (L) x 105mm (W) (5.7"x4.1")

### Environment

- Operating temperatures: 0°C to 60°C
- Storage temperature: -20°C to 85°C
- Relative humidity: Operating 10% to 90%, non-condensing

### Certifications

- CE approval
- FCC Class A

### ♦ EBC 352 (P/N: TBC) RoHS Compliant

Low power Embedded Board with Intel® Atom™ Dual Core D525 processor support DDR3 SO-DIMM memory module

## Ordering Information